



CSFC TAIWAN ENTERPRISE CORPORATION

Sales Office: 3F, No. 14, Cuizhu N. Rd., Yangzhong, Jiangsu, China

TEL: +86-511-88365501; FAX: +86-511-88350971

Web: www.csfchem.com

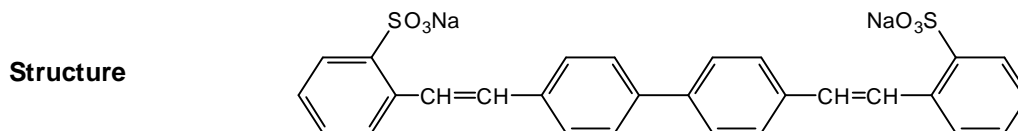
CSFC CBS-X Specification

Optical brightener

Chemical Name 1,1'-Biphenyl-4,4'-bis[2-(sodium sulfonate-phenyl)ethenyl]

Molecular Formula $C_{28}H_{20}S_2O_6Na_2$

Molecular Weight 562.56



CAS Number 27344-41-8

Specification Appearance: Yellowish green powder

Absorption (UV 349 nm): 1105 min.

Solubility in distilled water
Approx. 25g/L at 25°C
Approx. 100g/L at 70°C
Approx. 300g/L at 95°C

Active Content 95 % min

Volatile content 0.3 % max

Packing 25 kg net/ fiber drum

Applications An optical brightener for detergent powders, liquid detergent, detergent bars, soap bars, rinse softeners, creams etc.

Similar products Tinopal CBS-X (Ciba)

Edition Date: January 30, 2001
CSFC CBS Specification
<http://www.csfchem.com>

page 1/1

CSFC