



CSFC TAIWAN ENTERPRISE CORPORATION

Sales Office: 3F, No. 14, Cuizhu N. Rd., Yangzhong, Jiangsu, China
TEL:+86-511-88365501; FAX: +86-511-88350971
Web: www.csfchem.com

CSFC KCB Specification

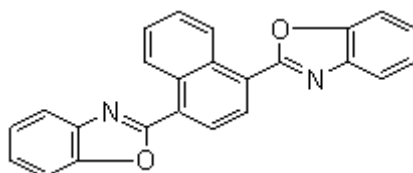
Optical brighteners

Chemical Name 2,2'-(1,4-Naphthalenediyl))bis-benzoxazole

Molecular Formula C₂₄H₁₄N₂O₂

Molecular Weight 362.39

Structure



CAS Number 5089-22-5

Specification Appearance Yellowish green powder

Assay(HPLC) % 98 min.

Melting point °C 210 min

Volatile content % 0.5 max

Ash content % 0.1 max

Packing 25 kgs net/ fiber drum

Applications An excellent optical brightener for polyolefins, PVC, expanded or forms of PVE, EVA, PU, and synthetic rubber, etc.

Similar products CSFC OB CSFC ER
CSFC OB-1 CSFC CBS
CSFC 127

Edition Date: September, 2000
CSFC KCB Specification
<http://www.csfchem.com>

page 1/1

CSFC